

Mounting system for **flat roof** with **standard modules**

Aesthetic, streamlined solution with minimal construction height

Installation without the need for special tools

Easy ballasting with gravel

Installed quickly and cost-effectively

Higher specific yield compared to east/west orientation

No roof penetrations

Neat cable routing

THE FLATTER THE MODULES, THE HIGHER THE YIELD!

The PV mounting system **FORMSOL^{160P}** has been specifically designed for flat roofs. The aim is the optimal utilisation of the roof area and a highly aesthetic integration of the photovoltaic system. The angle of inclination of the solar modules is 5°, which allows the spacing between the rows to be small. This results in a very large energy yield per roof area, with a higher specific yield compared to that obtained with an east/west orientation.

The **FORMSOL^{160P}** elements made of recycled PE are placed overlapping on the leak-proof roof covering. This design feature enables quick and easy assembly of the supporting construction on flat roofs, without the need for measuring. Half-size elements absorb the stronger winds encountered in the edge regions.

The **FORMSOL^{160P}** elements are weighted down with gravel or garden paving slabs to ensure that they remain firm in wind.

The aluminium sections are attached to the **FORMSOL^{160P}** elements using self-tapping screws without the need for special tools. The solar modules are then attached with module clips to the attachment points along the long edge at four equal incremental distances. Clips ensure easy and secure attachment of the cable harnesses to the mounting rail.

FORMSOL^{160P} offers an aesthetic mounting solution for standard modules on flat roofs.

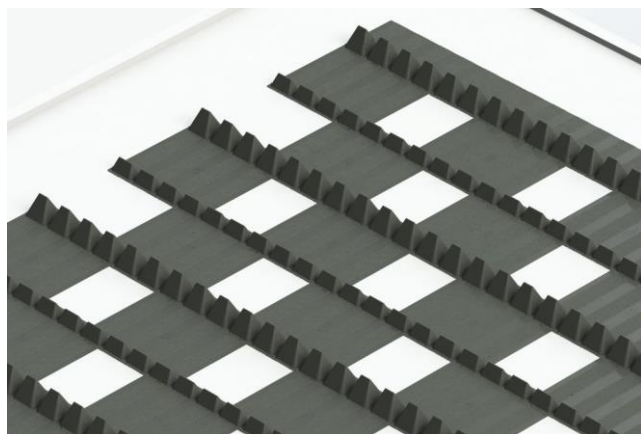
COST-EFFICIENT AND INNOVATIVE

The simplicity of the **FORMSOL^{160P}** mounting system keeps the costs for the supporting construction very low per square metre. The space-saving layout reduces the specific costs per kWp even further. The combination of high specific yield and very short installation time makes **FORMSOL^{160P}** the perfect choice!

The system was developed by PV-Integ AG – patent pending.

- *Vertical module installation*
- *No need for special tools*
- *Very easy installation without the need for measuring*
- *Few components*
- *Stackable*

PERFECT ROWS THANKS TO PREDEFINED GRID



NO ROOF PENETRATIONS

For the **FORMSOL^{160P}** mounting system, no roof penetrations or fixtures are necessary. This means that the type of roof covering is immaterial when opting for **FORMSOL^{160P}** as the supporting construction. The system can be used with any type of flat roof with inclinations of up to approx. 5°.

Opting for **FORMSOL^{160P}** as the supporting construction allows independence, quick decision making and a high level of flexibility.

KEEP IT SIMPLE!

The system is very easy to install and consists of few components:

- PE elements
- Aluminium rail
- Self-tapping screw
- Module clips
- Mounting clip for cable

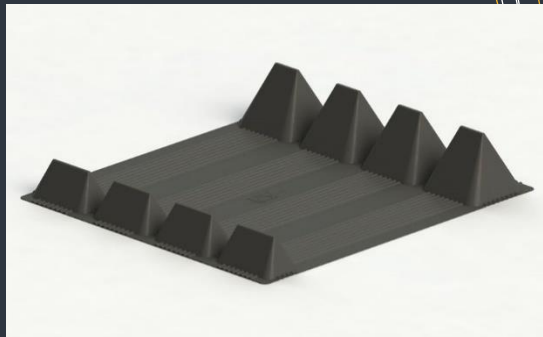
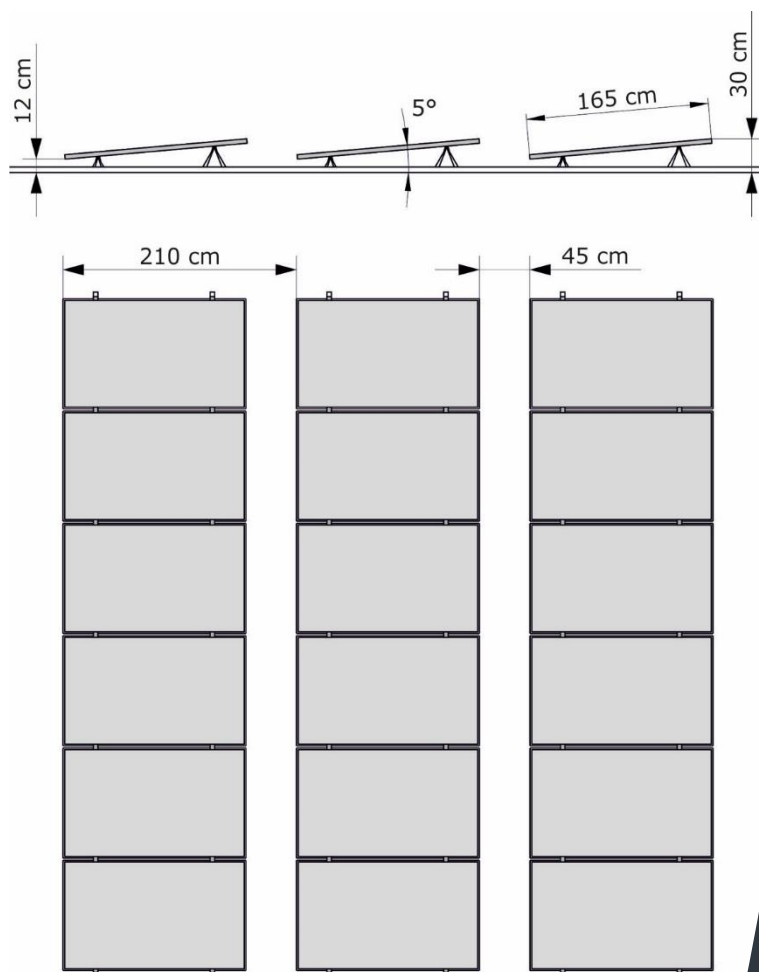


FORMSOL^{160P} —

A WINNER WITH ARCHITECTS!

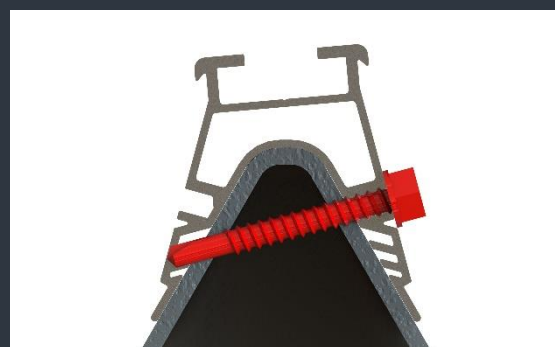
The **FORMSOL^{160P}** mounting system enables aesthetic, streamlined integration of a photovoltaic system on a flat roof. Due to the minimal incline, the construction height is very low, while the fixed spacing ensures that the rows are perfectly aligned.

INSTALLATION DIAGRAM



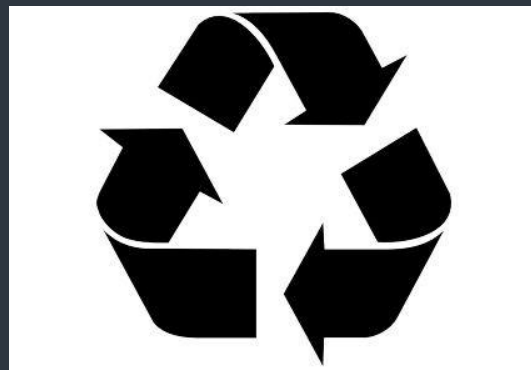
PE elements made of recycled plastic

- Weather-resistant, robust PE elements
- No damage to the roof covering
- To keep carbon emissions low during production, we use only recycled plastic.



Simple & clever

- The lower "wings" position the rail automatically on the cone-shaped supports
- The self-tapping screw penetrates both the rail and the supports and thus withstands even high pull-out forces.



Environmentally friendly

- Only recycled plastic is used
- Weather-resistant and robust
- Indefinitely recyclable



BERATUNG

UNTERSTÜTZUNG

VERKAUF

For questions, planning, projecting and selling of the **FORMSOL¹⁶⁰** mounting system, we will be happy to assist.

PV INTEG AG – INNOVATION FROM SWITZERLAND!

PV – Integ AG headquartered in Central Switzerland develops and sells mounting systems for PV modules. The company can count on the experience of its staff, and with its existing products has built a loyal customer base.

We believe that if module prices continue to fall, the mounting systems for PV installations will become increasingly important – not only in terms of purchasing, but also roof area utilisation, transport, installation time and aesthetics.

Due to our proximity to the PV market, we know the needs of installers and can meet them appropriately. In doing so, we are never satisfied with the existing solution, but rather continuously develop our products. For us it is also important to offer a sophisticated solution for the "little things" such as cable routing, lightning protection, packaging, dilation, etc.



PV Integ AG
Zentralstrasse 10
6030 Ebikon
Schweiz

Tel.: +41 (0)41 310 50 30
E-Mail: info@pvinteg.ch
Web: www.pvinteg.ch